

# 9.0 fibers

**Applications:**  
Highways| Urban and suburban roads with high traffic|

**Fibers**

Reinforce and stabilize the physical structure of the binder in SMA and OGFC mixes



[www.greenpavetech.com](http://www.greenpavetech.com)



## ITERFIBER- C NATURAL COMPRESSED MICROFIBER

### 1. APPLICATION

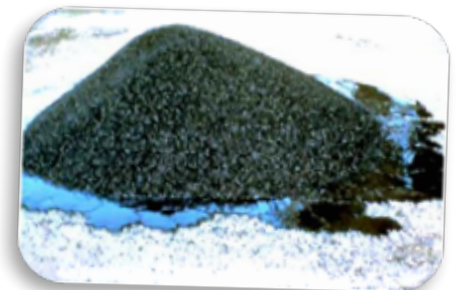
ITERFIBER- C is a stabilizing microfiber made from natural cellulose fibers for SMA (Stone Matrix Asphalt) and OGFC (Open Graded Friction Course) applications.

ITERFIBER- C acts as a stabilizer for bituminous mastic. Provides decrease in mobility with a consequent increase of the viscosity.

ITERFIBER-C must be added directly into the mix, preferably before the binder, through a screw auger or air blower using commercially available bins.

### 2. WHY FIBERS?

- Provides beneficial stabilization properties and meets federal specification for a stabilizer in SMA and OGFC.
- Assures proper distribution of the liquid asphalt throughout the aggregate during mix production, silo storage, transport of the mix to the jobsite, and during paving and compaction operations.
- Provides superior performance benefits to a Hot-Mix Asphalt design, ensuring a premium product.
- Offers excellent resistance to rutting caused by heavy vehicles and high traffic volumes.



**Bitumen without fibers  
cause binder percolation!**

### 2. DOSAGE

ITERFIBER-C dosage varies from 0.30% to 0.60% by aggregate weight, according to normal or modified binder percentage.

# 9.0 fibers



Example of Pneumatic Dosing System



## 3. COMPOSITION

Cellulose fibers in pellets.

## 4. PHYSICAL PROPERTIES

Average diameter	4 ÷ 6 mm
Average length	4 ÷ 10 mm
Color	from grey to brown
Apparent Density	0.45 ÷ 0.55 g/cm <sup>3</sup>
Absorption in oil (A. 26)	< 1,5 g in 5,0 g
Residual humidity	≤ 10%

## 5. FIBER'S PHYSICAL PROPERTIES

Average fiber length	> 200 μm
Average fiber diameter	> 10 μm
Resistance to temperature	> 390°F (250°C)

## 6. STORAGE

To be stored indoor, in its original package and sheltered from humidity.  
For prolonged storage, remove the plastic wrapping and/or the transparent protective cap.

## 7. PACKAGING

Large bags 1100 lb (500 kg)

## 8. SAFETY PRECAUTIONS

See the product's MSDS.